



## DeLight LED



### Congratulations on the good choice!

Studying the operation manual will help you get the best out of your device

Please consider before use:

**Patient's eyes must be protected with sunglasses**

**Metal parts of this product contain nickel and chrome**

**Use and storage at room temperature**

**Cables and connectors should be handled carefully**

## Cleaning

Clean the device by wiping with a moist towel. Recommended detergents include eyeglass cleaners and dish soaps (as mild water solutions). The device can be disinfected with 70% alcohol. Carrying strap is hand washable at 40°C temperature.



Do not immerse



Do not wash under running water

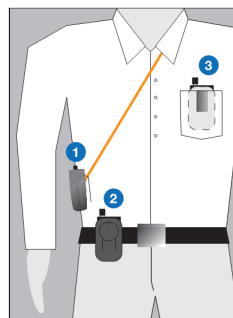
## Battery unit



Attach the lamp cord by pushing the connector into the socket



Push the connector's latch to the bottom when detaching the cord



The large power switch is easy to use aseptically by pressing with forearm or wrist. It is recommended to wear the battery with the provided carrying strap (1). The unit can also be worn on belt (2) or kept in pocket (3). **Do not pull from the lamp cord—the connector may suffer damage.**



The lamp cord can be guided and attached to clothing or carrying strap with the provided clips.

## Dimmer function

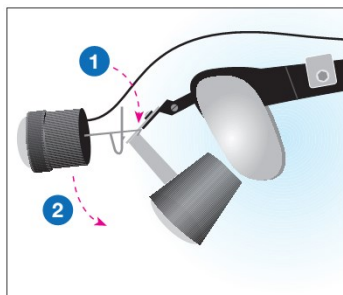
When the light is on, press the power switch continuously for about 3 seconds and the light starts to dim. When the light has dimmed to desired level, release the power switch and the brightness is set on this level. Increasing the light intensity works the same (opposite) way. Switching the light off and back on again will reset the light's intensity to highest level.

## Charging the battery

Li-Ion battery has no adverse memory effect so the battery can be charged at any time. The green indicator light is on during charging and turns off when the battery is full. The power supply turns off automatically when the battery is fully charged, which allows prolonged charging. The device can also be used while it is charging.

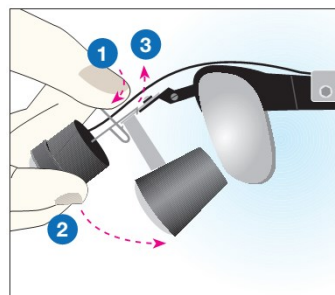
For security reasons, the light will first flash and then turn off after being continuously on for about 1 hour. Resume normal use by switching the light back on again.

## LED-lamp



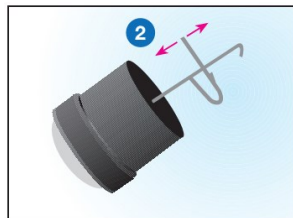
**Attaching**

Place the attachment's hooks behind the loupe structure or adapter metal (1). Press the lamp down to lock the latch (2).



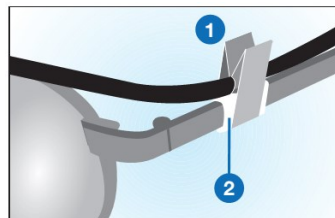
**Removing**

Press the latch forward towards lamp (1). Turn the lamp down (2) to release the attachment hooks (3).



**Lock sensitivity**

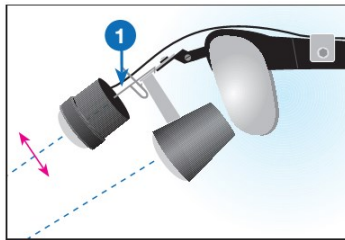
Attachment lock sensitivity can be adjusted by shaping the latch spring (2).



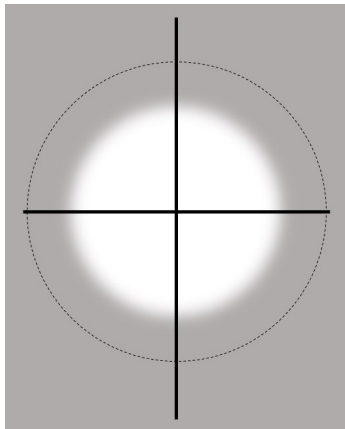
**Cord guide**

The clip (1) fastens the cord to spectacles and keeps it out of sight. Silicone tube around temple (2) provides good grip for the clip and prevents scratching. The clip can be moved by spreading it from above and sliding it along the cord to desired position.

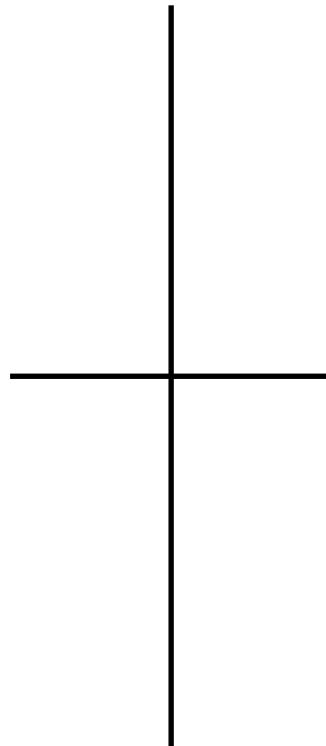
## Fine tuning the alignment



The lamp's alignment can be adjusted by bending the metal attachment at the base (1).



The beam should be aligned to the middle of the loupes' field of vision.



You can use the cross for help with aligning.

[www.MOptics.com](http://www.MOptics.com)

© MeridentOptergo Oy 2015  
Designed and made in Finland and Sweden  
Utility model



## BatPack 2.0



**Right-handed**



**Left-handed**

Attach the battery unit from its belt clip onto the BatPack's plate part. When wearing the system, the strap's cord pocket should go from your back and the battery unit should hang on your side with its control switch facing outwards.



Attach the lamp's cord into the battery unit, open the cord pocket's velcro strips and guide the cord inside the pocket. Fasten the velcro strips to close the pocket.



The BatPack's overall length can be adjusted from the slide lock located next to the battery unit's attachment plate. If necessary, extra lamp cord can be collected into the cord clip's loop.